

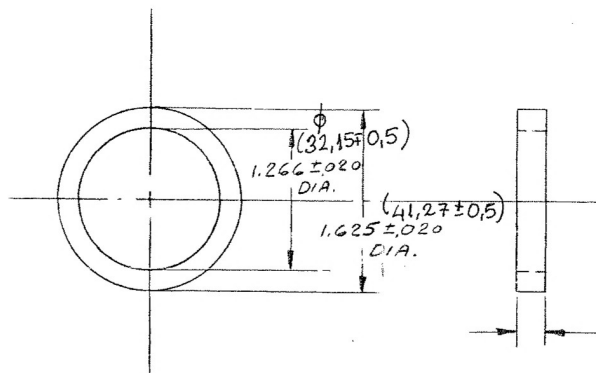
8306501

PERMISSIBLE VARIATION ON COMMON
FRACTION DIMENSIONS TO MACHINED SURFACES
TO BE ± 0.10 UNLESS OTHERWISE SPECIFIED.
FABRICATION TOLERANCE.

BREAK ALL SHARP
CORNERS UNLESS
OTHERWISE SPECIFIED.

COUNTERSINK ALL TAPPED
HOLES $118^\circ \times$ ONE THRU'D DEEP.

SURFACE FINISH SPECS.
IS IN ACCORDANCE
WITH G.M. ENGR. STDS.



Yr No

1983

TB1219 / 2

RECORDED

(A)
E.M.D. PART NO TO BE MOLDED OR STAMPED ON GASKET.

ENGINEERING APPROVAL
OF SOURCE REQUIRED

73024		A	NOTE REVISED	9.5.75	TR	6/16	6/16	MATERIAL EMS-602 DURO-70 OIL RESISTANT		NAME OF PART		PART NO.	IT. NO.
N. P. C. NO.		REV. LET.	REVISION	DATE	BY	CK.	APV'D	DR. Schmedt 4-17-61	DATE 4-17-61	ELECTRO-MOTIVE DIVISION GENERAL MOTORS CORPORATION LA GRANGE, ILLINOIS, U.S.A.			
FIRST USED ON		GP-22		CH. CK.		SUP. HLD 4-17-61		GASKET		DATE OF PRINT			
M.T.L. NET		ENGR. JPM 4-19-61		WELD.		CH. DR. 4-19-61		PART NO.		8306501			

FORM ENG 416-B 1000 2-61

GLENNON & KERN, INC., CHICAGO